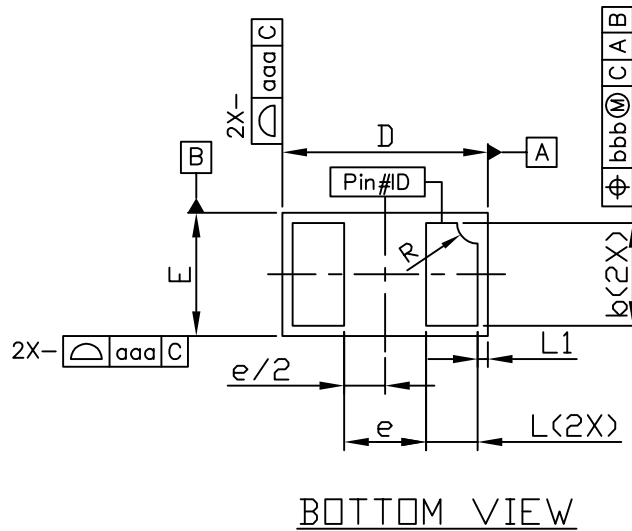
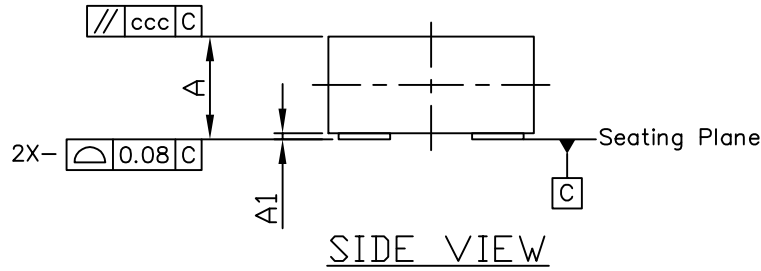
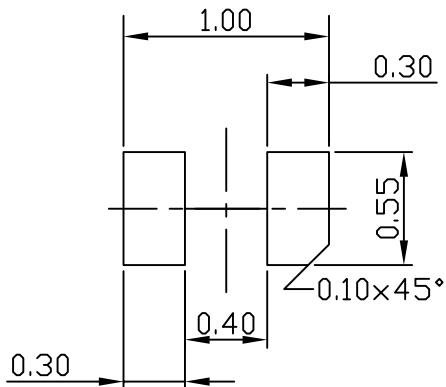




DFN1.0x0.6_2L_EP2_S PACKAGE OUTLINE



RECOMMENDED LAND PATTERN



UNIT: mm

| SYMBOLS | DIMENSIONS IN MILLIMETERS | | | DIMENSIONS IN INCHES | | |
|---------|---------------------------|------|------|----------------------|-------|-------|
| | MIN | NOM | MAX | MIN | NOM | MAX |
| A | 0.47 | 0.50 | 0.55 | 0.019 | 0.020 | 0.022 |
| A1 | 0.00 | 0.03 | 0.05 | 0.000 | 0.001 | 0.002 |
| b | 0.45 | 0.50 | 0.55 | 0.018 | 0.020 | 0.022 |
| D | 0.95 | 1.00 | 1.05 | 0.037 | 0.039 | 0.041 |
| E | 0.55 | 0.60 | 0.65 | 0.022 | 0.024 | 0.026 |
| e | --- | 0.40 | --- | --- | 0.016 | --- |
| L | 0.20 | 0.25 | 0.30 | 0.008 | 0.010 | 0.012 |
| L1 | 0.05±0.03 Ref. | | | 0.002±0.001 Ref. | | |
| R | 0.05 | 0.10 | 0.15 | 0.002 | 0.004 | 0.006 |
| aaa | 0.15 | | | 0.006 | | |
| bbb | 0.05 | | | 0.002 | | |
| ccc | 0.05 | | | 0.002 | | |

NOTE

1. ALL DIMENSION ARE IN MILLIMETERS.ANGLES ARE IN DEGREES.
2. COPLANARITY APPLIES TO THE EXPOSED HEAT SINK SLUG AS WELL AS THE TERMINALS.
3. THE SHAPE OF PIN ID CAN BE DIFFERENT PER MANUFACTURING LOCATION & PIN1 NOTCH IS ONLY FOR REFERENCE.