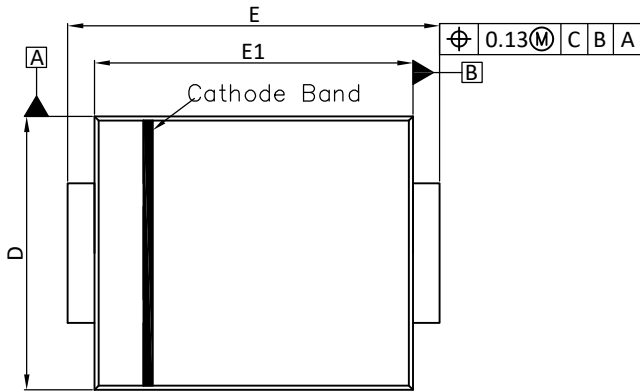
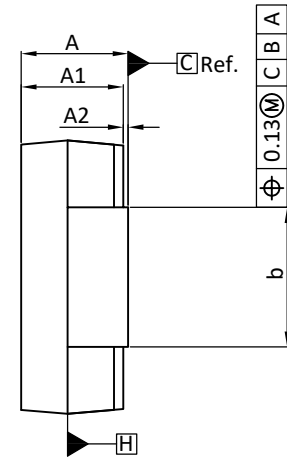




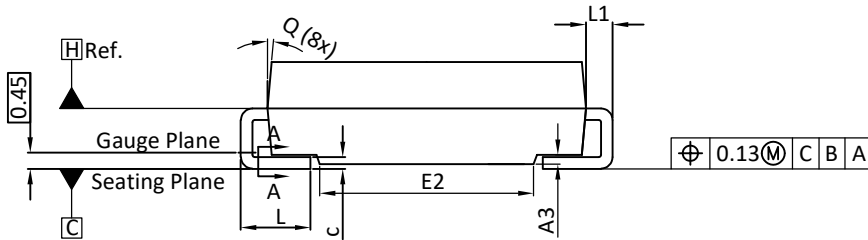
## DO-214AC Package Outline



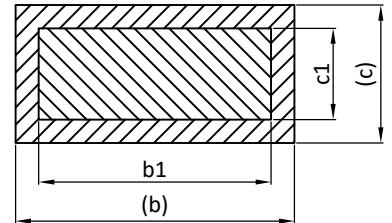
Top View



Side View

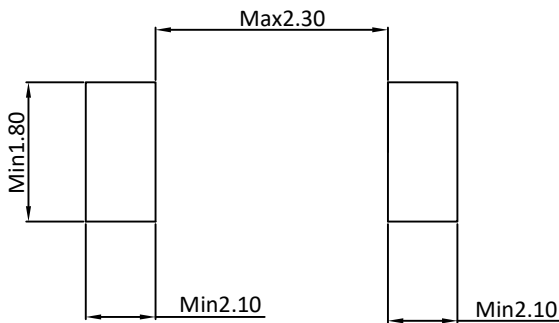


Side View



Section A-A

### LAND PATTERN RECOMMENDATIONS



| SYMBOLS | DIMENSION IN MILLIMETRES |      |       | DIMENSION IN INCHS |       |       |
|---------|--------------------------|------|-------|--------------------|-------|-------|
|         | MIN.                     | NOM. | MAX.  | MIN.               | NOM.  | MAX.  |
| A       | 1.98                     | 2.14 | 2.29  | 0.078              | 0.084 | 0.090 |
| A1      | 1.93                     | 1.99 | 2.09  | 0.076              | 0.078 | 0.082 |
| A2      | 0.05                     | 0.15 | 0.20  | 0.002              | 0.006 | 0.008 |
| A3      | 0.05                     | ---  | 0.30  | 0.002              | ----  | 0.012 |
| b       | 1.25                     | ---  | 1.65  | 0.049              | ----  | 0.065 |
| b1      | 1.25                     | 1.40 | 1.55  | 0.049              | 0.055 | 0.061 |
| c       | 0.15                     | ---  | 0.41  | 0.006              | ----  | 0.016 |
| c1      | 0.15                     | 0.23 | 0.31  | 0.006              | 0.009 | 0.012 |
| D       | 2.54                     | 2.67 | 2.79  | 0.100              | 0.105 | 0.110 |
| E       | 4.93                     | 5.11 | 5.28  | 0.194              | 0.201 | 0.208 |
| E1      | 3.99                     | 4.25 | 4.50  | 0.157              | 0.167 | 0.177 |
| E2      | 1.40                     | 1.65 | 1.90  | 0.055              | 0.065 | 0.075 |
| L       | 0.76                     | 1.15 | 1.52  | 0.030              | 0.045 | 0.060 |
| L1      | 0.152                    | ---  | 0.305 | 0.006              | ----  | 0.012 |
| Q       | 0° - 8°                  |      |       | 0° - 8°            |       |       |

UNIT: mm

### NOTES:

- DIMENSIONING AND TOLERANCING PER ASME Y14.5M-1994.
- CONTROLLING DIMENSION IS MILLIMETER, CONVERTED INCH DIMENSIONS ARE NOT NECESSARILY EXACT.
- DIMENSIONS D AND E1 DO NOT INCLUDE MOLD FLASH, MOLD FLASH SHALL NOT EXCEED 0.13MM PER SIDE.
- DIMENSIONS b1 AND c1 APPLY TO BASE METAL ONLY.  
DIMENSIONS b AND c APPLY TO PLATED LEADS.  
DIMENSIONS b,c,b1,c1 TO BE MEASURED ON FLAT SECTION OF THE LEAD.  
BETWEEN 0.13 AND 0.25MM FROM LEAD TIP.
- DIMENSIONS D AND E1 TO BE DETERMINED AT DATUM PLANE H.