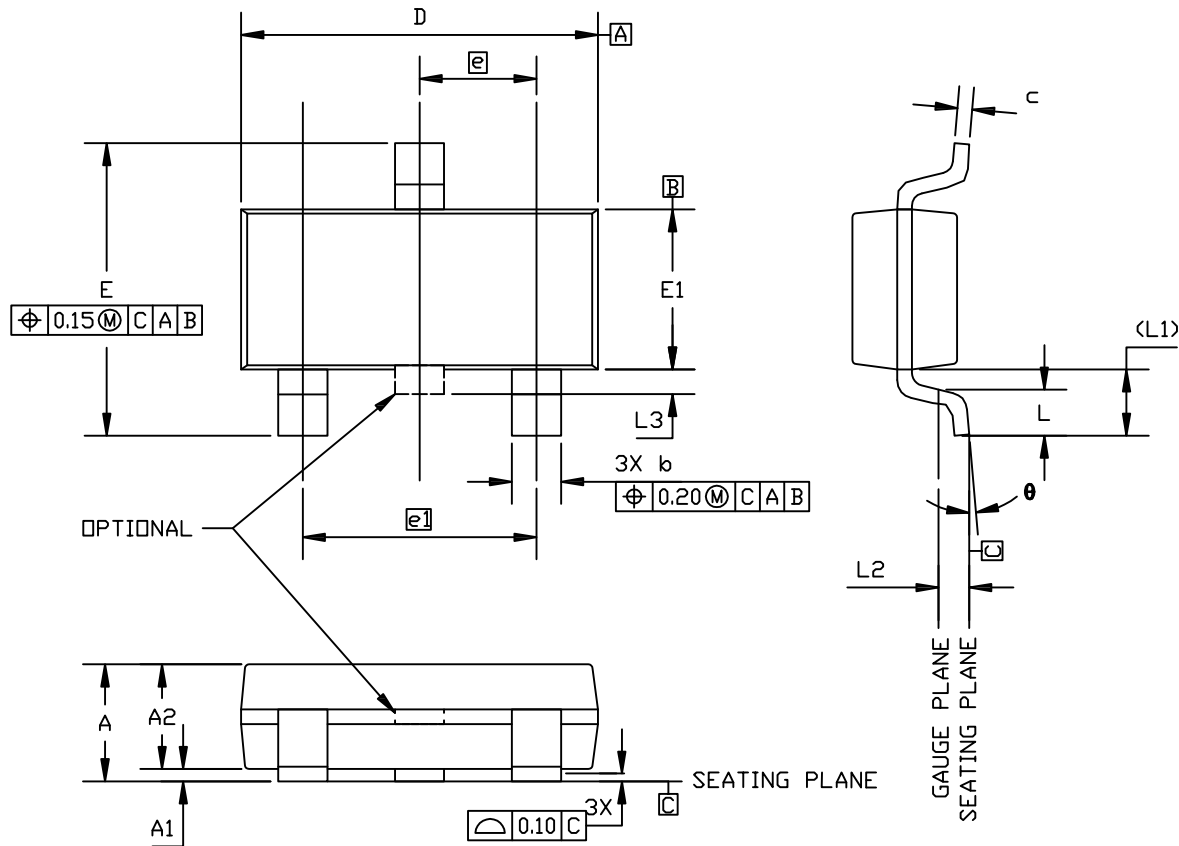
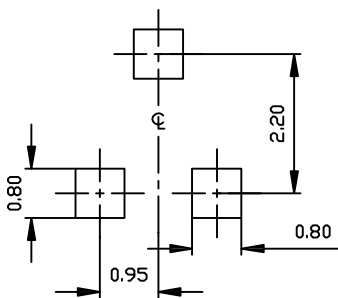




SOT23A STANDARD PACKAGE OUTLINE



RECOMMENDED LAND PATTERN



UNIT: mm

SYMBOL	DIMENSIONS IN MILLIMETERS			DIMENSIONS IN INCHES		
	MIN	NOM	MAX	MIN	NOM	MAX
A	0.713	0.95	1.17	0.028	0.037	0.046
A1	0.013	---	0.15	0.001	---	0.006
A2	0.70	0.85	1.02	0.028	0.033	0.040
b	0.30	0.40	0.51	0.012	0.016	0.020
c	0.08	0.13	0.20	0.003	0.005	0.008
D	2.80	2.90	3.04	0.110	0.114	0.120
E	2.10	2.38	2.64	0.083	0.094	0.104
E1	1.20	1.30	1.40	0.047	0.051	0.055
e	0.95BSC			0.037BSC		
e1	1.90BSC			0.075BSC		
L	0.40	0.50	0.60	0.016	0.020	0.024
L1	0.54REF			0.021REF		
L2	0.25REF			0.010REF		
L3	---	---	0.20	---	---	0.008
θ	0°	---	8°	0°	---	8°

NOTE:

1. ALL DIMENSIONS ARE IN MILLIMETERS.
2. CONTROLLING DIMENSION IS MILLIMETER. CONVERTED INCH DIMENSIONS ARE NOT NECESSARILY EXACT.
3. DIMENSION D DOES NOT INCLUDE MOLD FLASH, PROTRUSIONS OR GATE BURR. MOLD FLASH PROTRUSION OR GATE BURRS SHALL NOT EXCEED 0.25mm PER END. DIMENSION E_1 DOES NOT INCLUDE INTERLEAD FLASH OR PROTRUSION. INTERLEAD FLASH OR PROTRUSION SHALL NOT EXCEED 0.25mm PER SIDE.
4. THE PACKAGE TOP MAY BE SMALLER THAN THE PACKAGE BOTTOM. DIMENSION D AND E_1 ARE DETERMINED AT THE OUTMOST EXTREMES OF THE PLASTIC BODY EXCLUSIVE OF MOLD FLASH, TIE BAR BURRS, GATE BURRS AND INTERLEAD FLASH, BUT INCLUDING ANY MISMATCH BETWEEN THE TOP AND BOTTOM OF THE PLASTIC BODY.
5. FOLLOW JEDEC TO-236H AA.