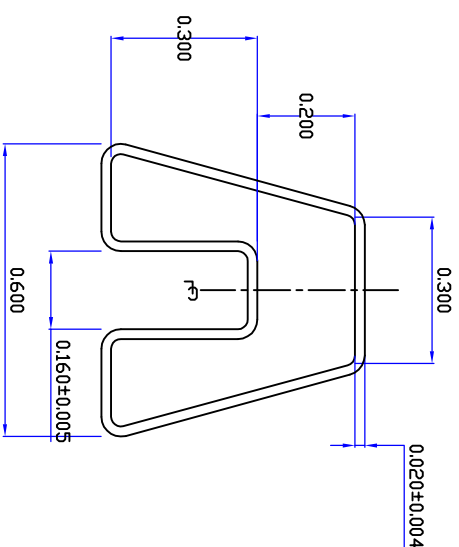
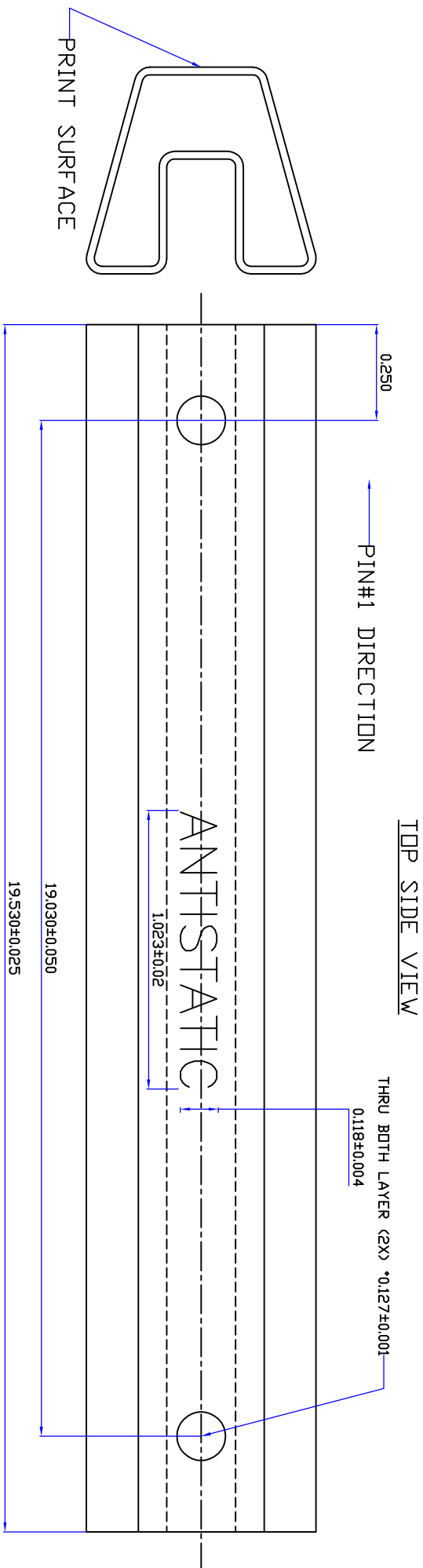




PDIP8 PLASTIC TUBE DRAWING

REV.	DATE	DESCRIPTION	DRG.
A	2011-1-25	NEW ISSUE	L SHI



- NOTE:
1. PLASTIC CARRIER THERMAL REQUIREMENTS TO WITHSTAND CONTINUOUS AMBIENT TEMPERATURE OF 125° F (51° C).
 2. CLARITY: PARTS IN TUBE TO BE CLEARLY VISIBLE IN DAYLIGHT TO THE NAKED EYE.
 3. PRINT LOCATION: TOP PORTION AND CENTRE OF THE TUBE.
 4. MARK COLOR: BLACK.
 5. MAT'L: MODIFIED ACRYLIC OR RIGID PVC.
 6. TUBE TO BE COATED (INSIDE AND OUT) WITH ANTI-STATIC AGENTS AND THE SURFACE RESISTIVITY SHALL BE 5X10¹¹ OHM/SQ MAX.
 7. FLATNESS: TUBE TO BE FLAT WITHIN 1/32 INCH (0.79mm).
 8. ALL MARKS SHALL PASS 5 CYCLES COTTON BRUSH TEST.
 9. TUBE WITH RIPPLE SURFACE AT PACKAGE LOADING AREA THAT AFFECT PACKAGE VISIBILITY IS NOT ACCEPTABLE.
 10. ALL BURRS ON INSIDE SURFACE OF THE TUBE SHALL BE <0.002 INCH (0.05mm) IN HEIGHT.
 11. ALL DIMENSIONS ARE IN INCH (UNLESS OTHERWISE STATED).

DRAWN BY		SIGNATURE		TITLE	
APPROVED BY		SIGNATURE		PDIP8 TUBE DRAWING	
SCALE		PROJECTION		DRAWING NUMBER	
N.T.S.		TR-00067		PAGE 1 OF 1	
				VENDOR CODE	
				N	
				REV. A	