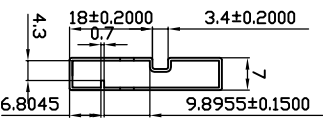
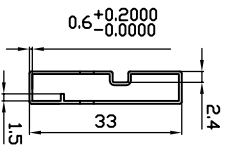
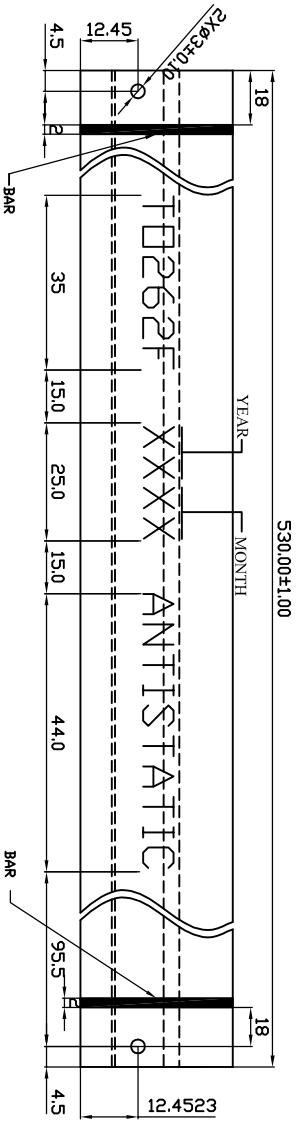




ALPHA & OMEGA
SEMICONDUCTOR

TO262F PLASTIC TUBE DRAWING



1. ALL TUBE TOLERANCES TO BE ±0.20 UNLESS OTHERWISE SPECIFIED.
2. ALL RADIUS AND ANGLES REFERENCE CAMBER'S MAX.
3. ENTIRE TUBE MUST MEET ANTISTATIC TESTING CRITERIA PER MIL-STD-81705B AND ASTM-D257.
4. MATERIAL: PET, ANTISTATIC TREATED UNLESS OTHERWISE SPECIFIED.

OPTION	TUBE COLOR	PRINT COLOR	BAR COLOR
1	TRANSPARANACE	BLACK	BLUE
2	RED	BLACK	BLUE
3	YELLOW	BLACK	BLUE

7. PACKING QTY :

PKG	QTY(PCS)
TO262F	50

REV	DATE	DESCRIPTION	DRG
A		NEW ISSUE	

DRAWN BY		SIGNATURE		TITLE	
APPROVED BY		SIGNATURE		TO262F TUBE DRAWING	
SCALE	N.T.S.	PROJECTION	TR-00064	UNIT	MM
				PAGE	1 OF 1
				REVISION	REV A