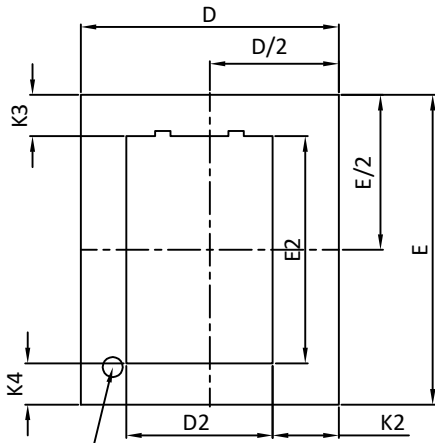


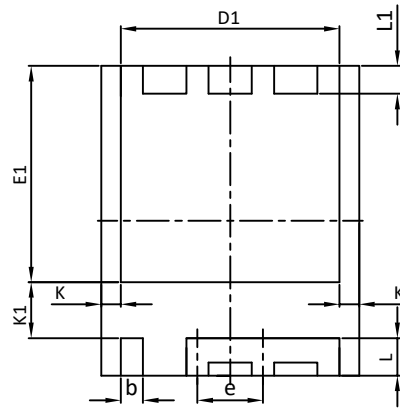


DFN5x6_8L_EP1_TEP1_S PACKAGE OUTLINE

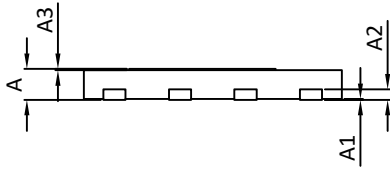


PIN#1 DOT BY MARKING

TOP VIEW

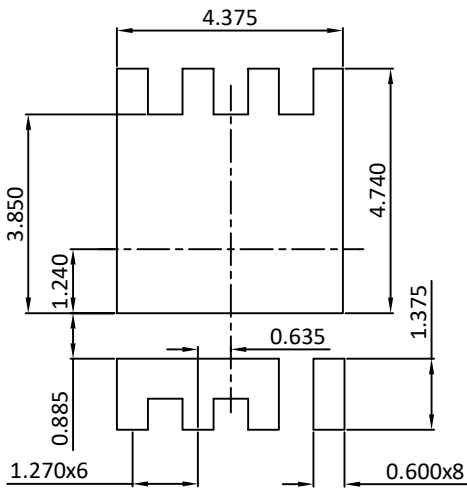


BOTTOM VIEW



SIDE VIEW

RECOMMENDED LAND PATTERN



UNIT: mm

SYMBOL	DIMENSIONS IN MILLIMETERS			DIMENSIONS IN INCHS		
	MIN.	NOM.	MAX.	MIN.	NOM.	MAX.
A	0.600	0.650	0.700	0.024	0.026	0.028
A1	0.000	0.020	0.050	0.000	0.001	0.002
A2	0.20REF			0.008REF		
A3	0.000	----	0.050	0.000	----	0.002
D	4.900	5.000	5.100	0.193	0.197	0.201
E	5.900	6.000	6.100	0.232	0.236	0.240
D1	4.140	4.240	4.340	0.163	0.167	0.171
D2	2.740	2.840	2.940	0.108	0.112	0.116
E1	4.090	4.190	4.290	0.161	0.165	0.169
E2	4.300	4.400	4.500	0.169	0.173	0.177
K	0.280	0.380	0.480	0.011	0.015	0.019
K1	0.985	1.085	1.185	0.039	0.043	0.047
K2	1.27REF			0.055REF		
K3	0.800REF			0.048REF		
K4	0.800REF			0.026REF		
L	0.625	0.725	0.825	0.025	0.029	0.032
L1	0.440	0.540	0.640	0.017	0.021	0.025
e	1.27BSC			0.05BSC		
b	0.330	0.430	0.530	0.013	0.017	0.021

Note:

1. Dimensioning and tolerancing conform to ASME Y14.5M-1994.
2. All dimensions are in millimeters.
3. THIS PACKAGE WAS QUALIFIED USING IR REFLOW PROCESS (JEDEC STANDARD). FOR USAGE IN OTHER SOLDERING PROCESSES, PLEASE CONTACT LOCAL AOS REPRESENTATIVES.