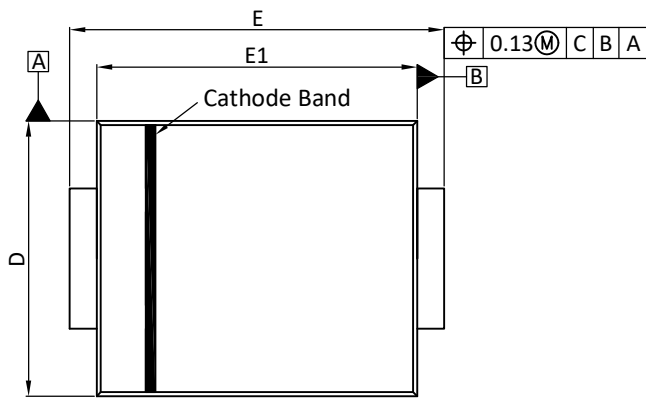
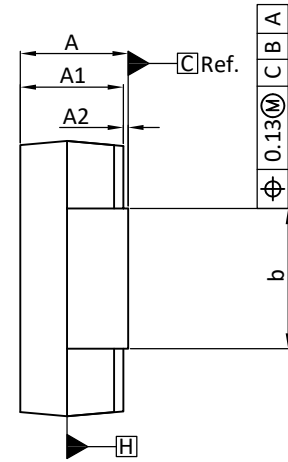




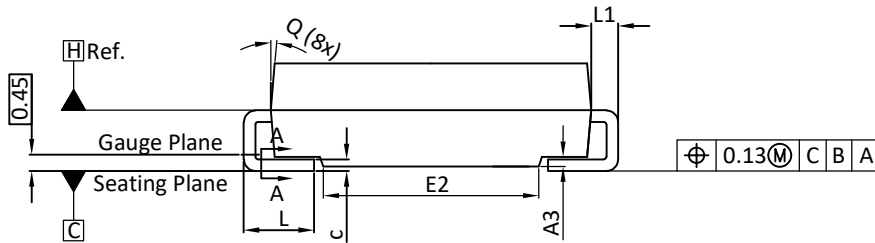
DO-214AA Package Outline



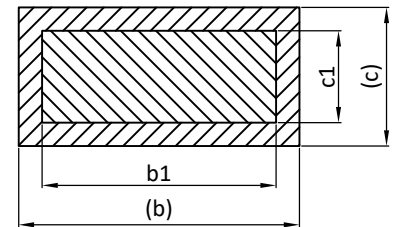
Top View



Side View

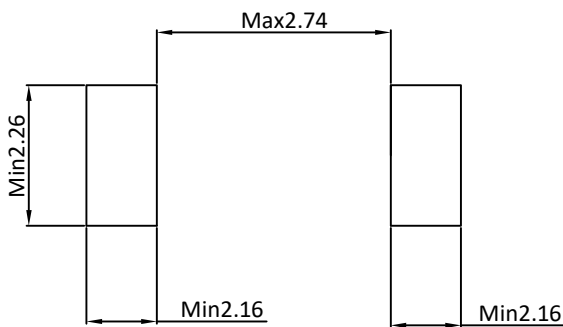


Side View



Section A-A

LAND PATTERN RECOMMENDATIONS



SYMBOLS	DIMENSION IN MILLIMETRES			DIMENSION IN INCHS		
	MIN.	NOM.	MAX.	MIN.	NOM.	MAX.
A	2.13	2.29	2.44	0.084	0.090	0.096
A1	2.08	2.14	2.24	0.082	0.084	0.088
A2	0.05	0.15	0.20	0.002	0.006	0.008
A3	0.05	---	0.30	0.002	---	0.012
b	1.95	---	2.20	0.077	---	0.087
b1	1.95	2.05	2.10	0.077	0.081	0.083
c	0.15	---	0.41	0.006	---	0.016
c1	0.15	0.23	0.31	0.006	0.009	0.012
D	3.30	3.62	3.94	0.130	0.143	0.155
E	5.21	5.40	5.59	0.205	0.213	0.220
E1	4.06	4.32	4.57	0.160	0.170	0.180
E2	1.65	1.90	2.15	0.065	0.075	0.085
L	0.76	1.15	1.52	0.030	0.045	0.060
L1	0.152	---	0.305	0.006	---	0.012
Q	0° - 8°			0° - 8°		

UNIT: mm

NOETS:

1. DIMESNSIONING AND TOLERANCING PER ASME Y14.5M-1994.
2. CONTROLLING DIMENSION IS MILLIMETER, CONVERTED INCH DIMENSIONS ARE NOT NECESSARILY EXACT.
3. DIMENSIONS D AND E1 DO NOT INCLUDE MOLD FLASH, MOLD FLASH SHALL NOT EXCEED 0.13MM PER SIDE.
4. DIMENSIONS b1 AND c1 APPLY TO BASE METAL ONLY.
DIMENSIONS b AND c APPLY TO PLATED LEADS.
DIMENSIONS b,c,b1,c1 TO BE MEASURED ON FLAT SECTION OF THE LEAD.
BETWEEN 0.13 AND 0.25MM FROM LEAD TIP.
5. DIMENSIONS D AND E1 TO BE DETERMINED AT DATUM PLANE H.