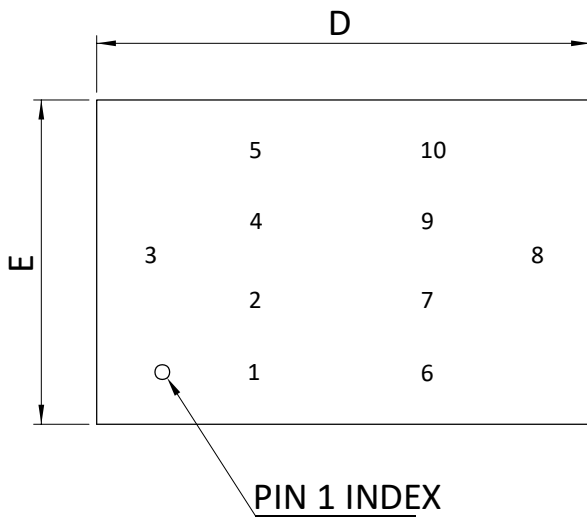
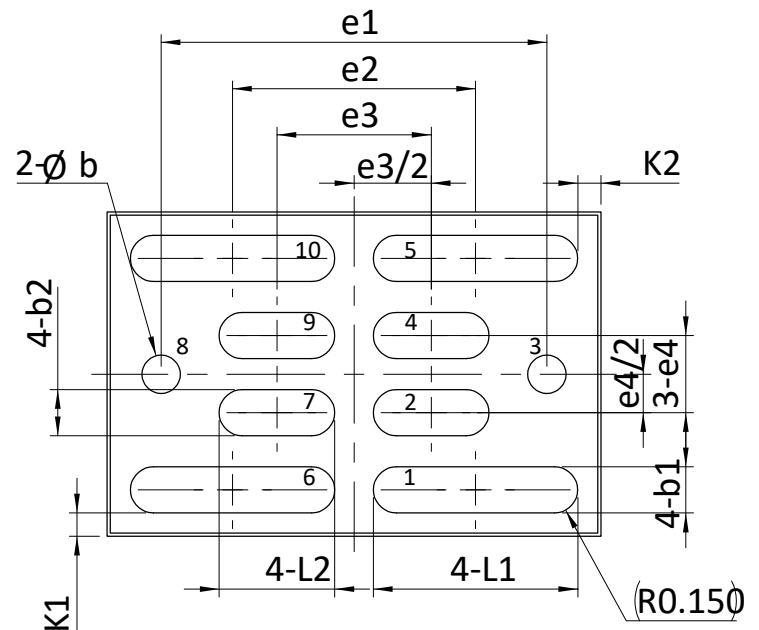


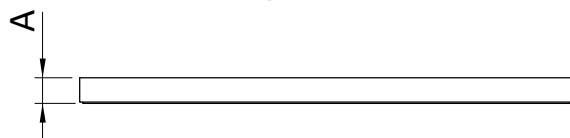
AlphaDFN3.2x2.1_10 PACKAGE OUTLINE



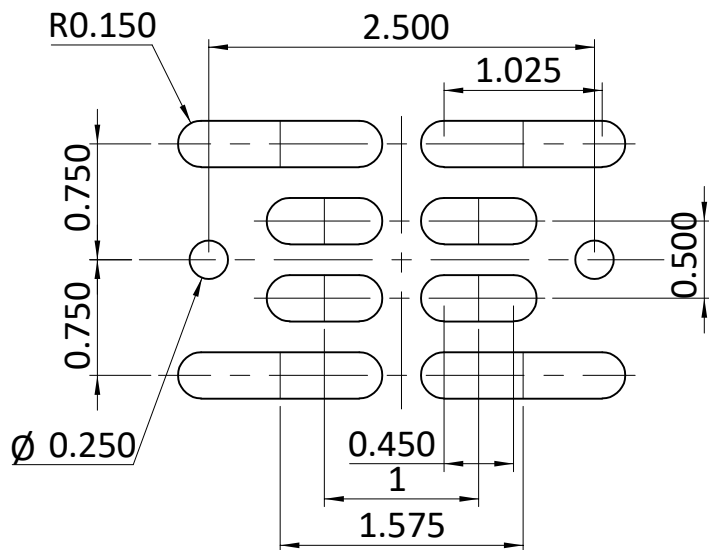
TOP VIEW



BOTTOM VIEW



SIDE VIEW



RECOMMENDED LAND PATTERN

| SYMBOLS | DIM. IN MM | | | DIM. IN INCH | | |
|---------|------------|-------|-------|--------------|-------|-------|
| | MIN. | NOM. | MAX. | MIN. | NOM. | MAX. |
| A | --- | 0.100 | 0.130 | --- | 0.004 | 0.005 |
| b | 0.220 | 0.250 | 0.280 | 0.009 | 0.010 | 0.011 |
| b1 | 0.270 | 0.300 | 0.330 | 0.011 | 0.012 | 0.013 |
| b2 | 0.270 | 0.300 | 0.330 | 0.011 | 0.012 | 0.013 |
| D | 3.170 | 3.200 | 3.230 | 0.125 | 0.126 | 0.127 |
| E | 2.070 | 2.100 | 2.130 | 0.081 | 0.083 | 0.084 |
| e1 | 2.500BSC. | | | 0.098BSC. | | |
| e2 | 1.575BSC. | | | 0.062BSC. | | |
| e3 | 1.000BSC. | | | 0.039BSC. | | |
| e4 | 0.500BSC. | | | 0.024BSC. | | |
| L1 | 1.295 | 1.325 | 1.355 | 0.051 | 0.052 | 0.053 |
| L2 | 0.720 | 0.750 | 0.780 | 0.028 | 0.030 | 0.031 |
| K1 | 0.120 | 0.150 | 0.180 | 0.005 | 0.006 | 0.007 |
| K2 | 0.120 | 0.150 | 0.170 | 0.005 | 0.006 | 0.007 |

NOTE:

- CONTROLLED DIMENSIONS ARE IN MILLIMETRES. CONVERTED INCH DIMENSIONS ARE NOT NECESSARILY EXACT.
- THIS PACKAGE WAS QUALIFIED USING IR REFLOW PROCESS (JEDEC STANDARD). FOR USAGE IN OTHER SOLDERING PROCESSES, PLEASE CONTACT LOCAL AOS REPRESENTATIVES.