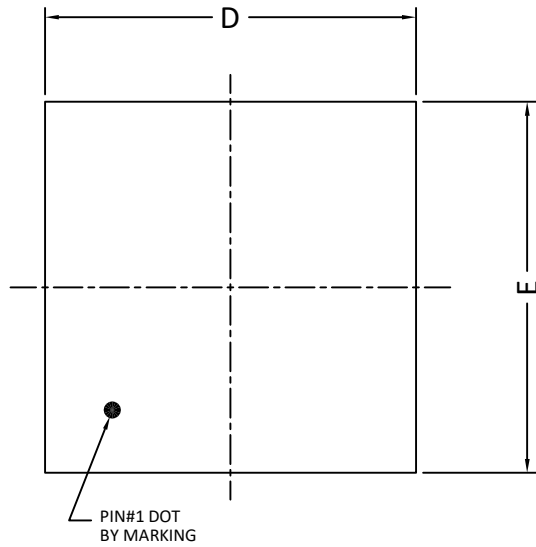
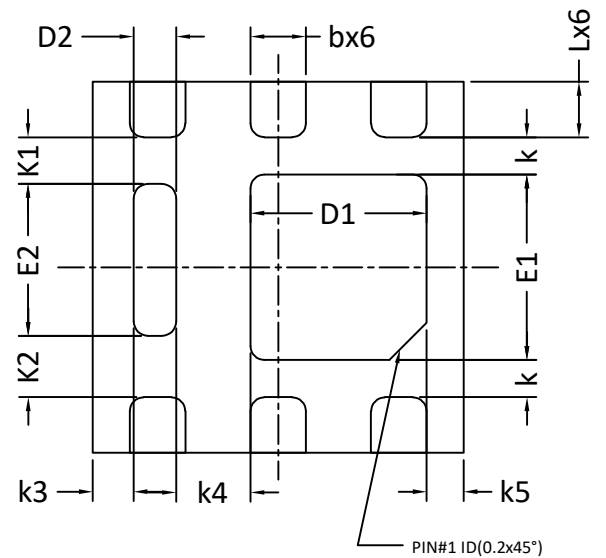
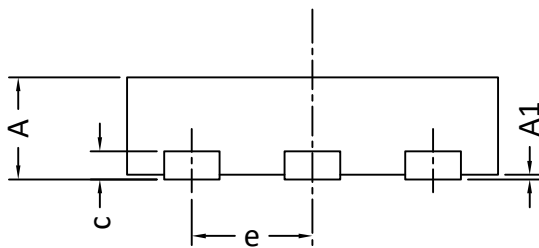
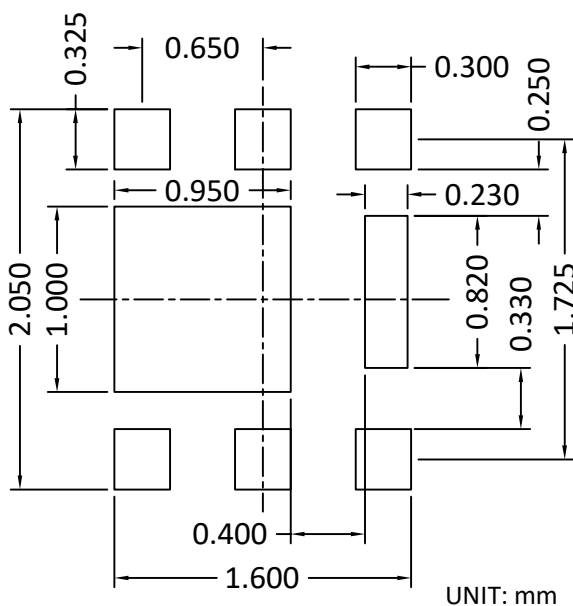


DFN2x2B_6L_EP1_S PACKAGE OUTLINE

TOP VIEW

BOTTOM VIEW

SIDE VIEW
RECOMMENDED LAND PATTERN


SYMBOLS	DIM. IN MM			DIM. IN INCH		
	MIN.	NOM.	MAX.	MIN.	NOM.	MAX.
A	0.500	0.550	0.600	0.020	0.022	0.024
A1	0.000	---	0.050	0.000	---	0.002
b	0.250	0.300	0.350	0.010	0.012	0.014
c	0.152REF			0.006REF		
D	1.900	2.000	2.100	0.075	0.079	0.083
D1	0.850	0.950	1.050	0.033	0.037	0.041
D2	0.130	0.230	0.330	0.005	0.009	0.013
E	1.900	2.000	2.100	0.075	0.079	0.083
E1	0.900	1.000	1.100	0.035	0.039	0.043
E2	0.720	0.820	0.920	0.028	0.032	0.036
e	0.65BSC			0.026BSC		
K	0.100	0.200	0.300	0.004	0.008	0.012
K1	0.150	0.250	0.350	0.006	0.010	0.014
K2	0.230	0.330	0.430	0.009	0.013	0.017
K3	0.120	0.220	0.320	0.005	0.009	0.013
K4	0.300	0.400	0.500	0.012	0.016	0.020
K5	0.100	0.200	0.300	0.004	0.008	0.012
L	0.250	0.300	0.350	0.010	0.012	0.014

NOTE

- CONTROLLING DIMENSION IS MILLIMETER.
CONVERTED INCH DIMENSIONS ARE NOT NECESSARILY EXACT.
- THIS PACKAGE WAS QUALIFIED USING IR REFLOW PROCESS (JEDEC STANDARD). FOR USAGE IN OTHER SOLDERING PROCESSES, PLEASE CONTACT LOCAL AOS REPRESENTATIVES.