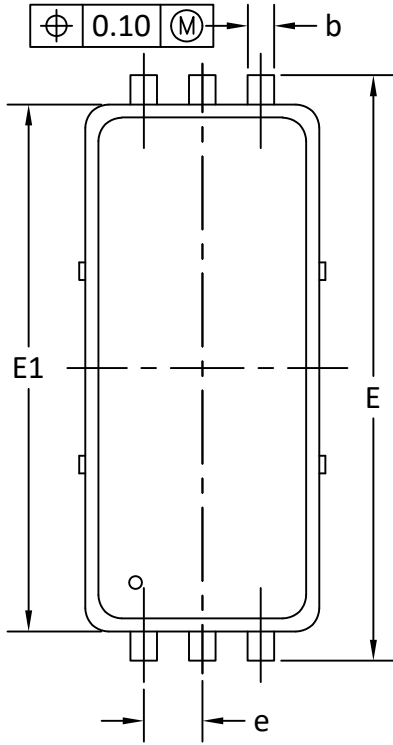
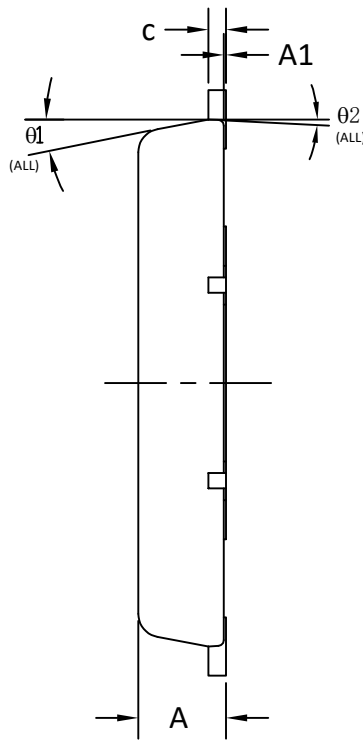




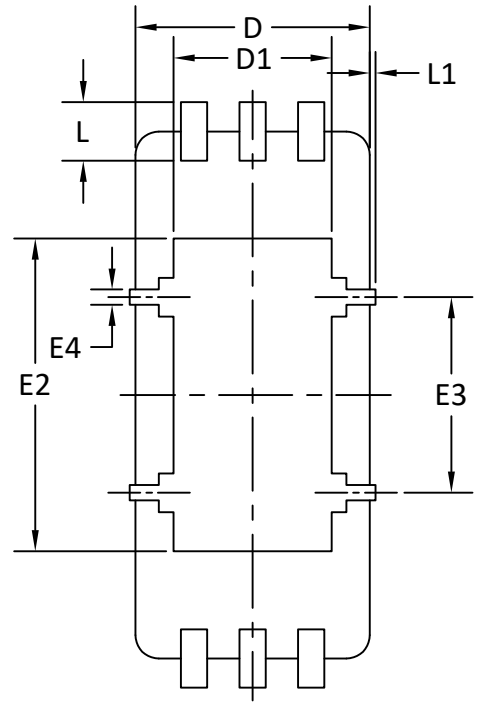
DFN2x5_6L_EP1_P PACKAGE OUTLINE



TOP VIEW

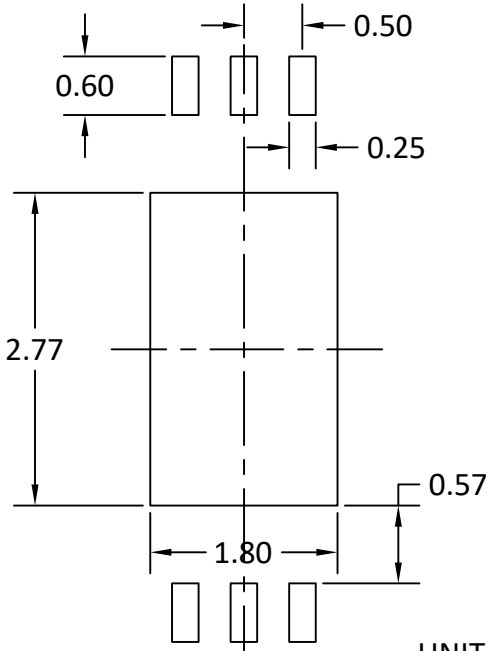


SIDE VIEW



BOTTOM VIEW

RECOMMENDED LAND PATTERN



UNIT: mm

SYMBOLS	DIM. IN MM			DIM. IN INCH		
	MIN.	NOM.	MAX.	MIN.	NOM.	MAX.
A	0.700	0.750	0.800	0.028	0.030	0.031
A1	0.000	-	0.050	0.000	-	0.002
b	0.200	0.230	0.300	0.008	0.009	0.012
c	0.100	0.150	0.200	0.004	0.006	0.008
D	1.900	2.000	2.100	0.075	0.079	0.083
D1	1.300	1.350	1.550	0.051	0.053	0.061
E	4.900	5.000	5.100	0.193	0.197	0.201
E1	4.400	4.500	4.600	0.173	0.177	0.181
E2	2.600	2.670	2.950	0.102	0.105	0.116
E3	1.620	1.670	1.720	0.064	0.066	0.068
E4	0.080	0.130	0.180	0.003	0.005	0.007
e	0.450	0.500	0.550	0.018	0.020	0.022
L	0.400	0.500	0.600	0.016	0.020	0.024
L1	0.000	-	0.100	0.000	-	0.004
θ1	0°	10°	12°	0°	10°	12°
θ2	0°	3°	5°	0°	3°	5°

NOTE

1. PACKAGE BODY SIZES EXCLUDE MOLD FLASH AND GATE BURRS.
MOLD FLASH AT THE NON-LEAD SIDES SHOULD BE LESS THAN 6 MIL EACH.
2. CONTROLLING DIMENSION IS MILLIMETER.
CONVERTED INCH DIMENSIONS ARE NOT NECESSARILY EXACT.
3. THIS PACKAGE WAS QUALIFIED USING IR REFLOW PROCESS (JEDEC STANDARD). FOR USAGE IN OTHER SOLDERING PROCESSES, PLEASE CONTACT LOCAL AOS REPRESENTATIVES.