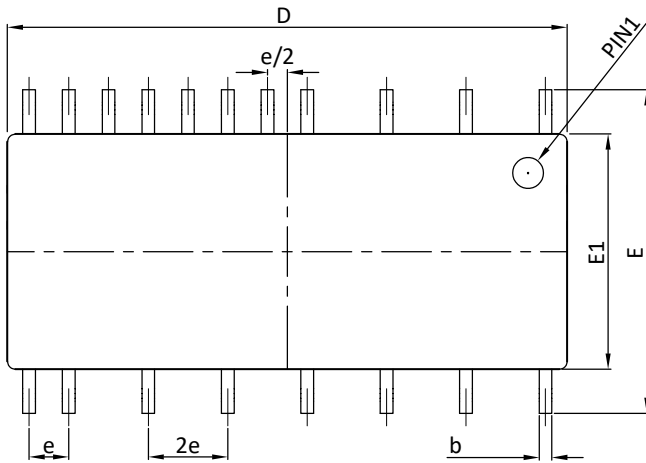
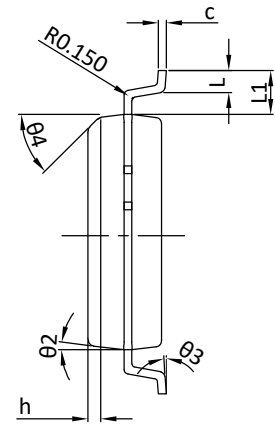




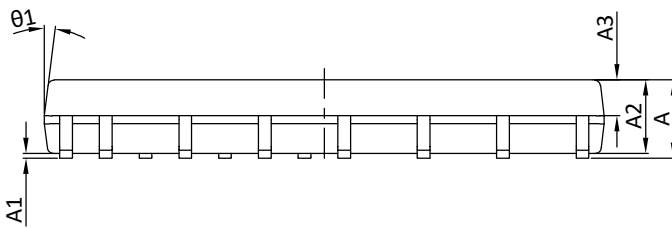
## IPM-7 Package Outline



TOP VIEW

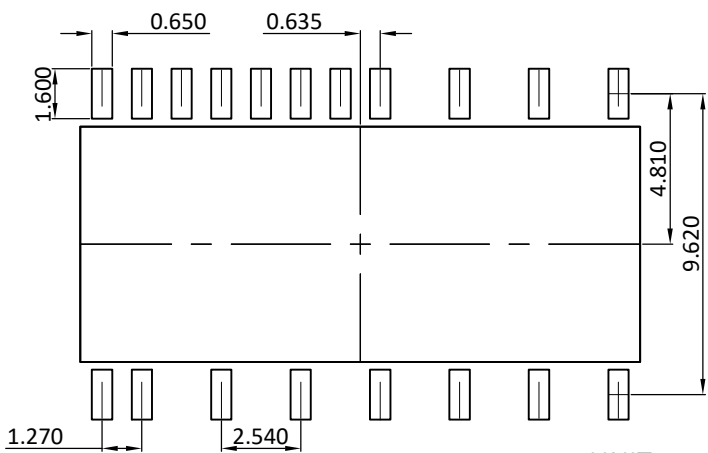


SIDE VIEW



SIDE VIEW

### LAND PATTERN RECOMMENDATIONS



UNIT: mm

| SYMBOLS | DIMENSION IN MILLIMETRES |        |        | DIMENSION IN INCHS |       |       |
|---------|--------------------------|--------|--------|--------------------|-------|-------|
|         | MIN.                     | NOM.   | MAX.   | MIN.               | NOM.  | MAX.  |
| A       | 2.304                    | 2.504  | 2.704  | 0.091              | 0.099 | 0.106 |
| A1      | 0.050                    | 0.150  | 0.250  | 0.002              | 0.006 | 0.010 |
| A2      | 2.254                    | 2.354  | 2.454  | 0.089              | 0.093 | 0.097 |
| A3      | 1.050                    | 1.150  | 1.250  | 0.041              | 0.045 | 0.049 |
| D       | 17.800                   | 17.900 | 18.000 | 0.701              | 0.705 | 0.709 |
| E       | 10.140                   | 10.340 | 10.540 | 0.399              | 0.407 | 0.415 |
| E1      | 7.420                    | 7.520  | 7.620  | 0.292              | 0.296 | 0.300 |
| L       | 0.505                    | 0.705  | 0.905  | 0.020              | 0.028 | 0.036 |
| L1      | 1.210                    | 1.410  | 1.610  | 0.048              | 0.056 | 0.063 |
| e       | 1.270TYP.                |        |        | 0.050TYP.          |       |       |
| b       | 0.410TYP.                |        |        | 0.016TYP.          |       |       |
| c       | 0.254TYP.                |        |        | 0.010TYP.          |       |       |
| theta1  | 7°TYP.                   |        |        | 7°TYP.             |       |       |
| theta2  | 7°TYP.                   |        |        | 7°TYP.             |       |       |
| theta3  | 0°                       | ---    | 8°     | 0°                 | ---   | 8°    |
| theta4  | 45°TYP.                  |        |        | 45°TYP.            |       |       |
| h       | 0.381TYP.                |        |        | 0.015TYP.          |       |       |

### NOTES

1. PACKAGE BODY SIZES EXCLUDE MOLD FLASH AND GATE BURRS, MOLD FLASH SHOULD BE LESS THAN 6 MIL.
2. TOLERANCE 0.100 MILLIMETERS UNLESS OTHERWISE SPECIFIED.
3. CONTROLLING DIMENSION IS MILLIMETER, CONVERTED INCH DIMENSIONS ARE NOT NECESSARILY EXACT.