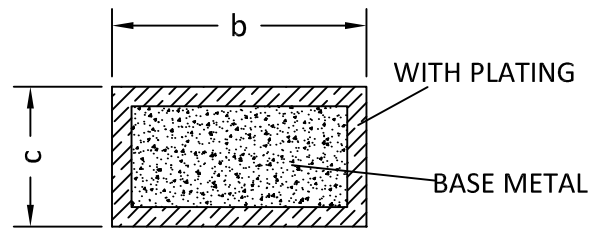
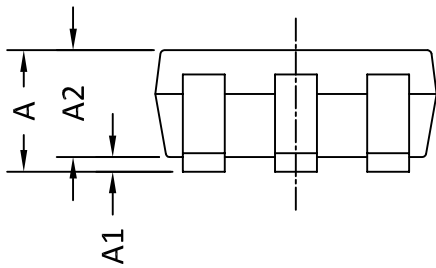
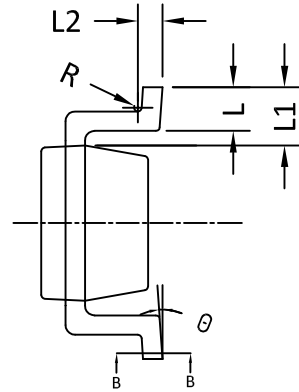
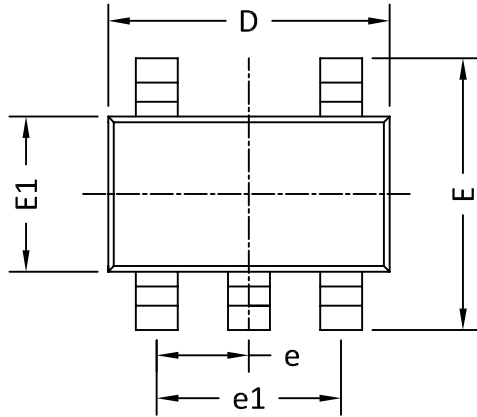


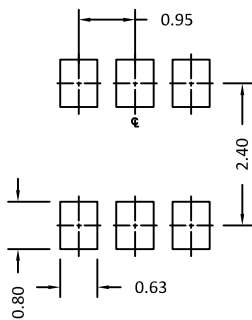


SOT23A_5L PACKAGE OUTLINE



SECTION B-B

RECOMMENDED LAND PATTERN



UNIT: mm

SYMBOLS	DIMENSION IN MM			DIMENSION IN INCHES		
	MIN	NOM	MAX	MIN	NOM	MAX
A	---	---	1.25	----	----	0.049
A1	0.00	---	0.15	0.000	----	0.006
A2	0.70	0.90	1.20	0.028	0.035	0.047
b	0.30	0.40	0.50	0.012	----	0.020
c	0.08	0.13	0.20	0.003	0.005	0.008
D	2.800	2.926	3.026	0.110	0.115	0.119
E	2.60	2.80	3.00	0.102	0.110	0.118
E1	1.500	1.626	1.726	0.059	0.064	0.068
e	0.85	0.95	1.05	0.033	0.037	0.041
e1	1.80	1.90	2.00	0.071	0.075	0.079
L	0.30	0.45	0.60	0.012	0.018	0.024
L1	0.60 REF			0.024 REF		
L2	0.254 BSC			0.010 BSC		
R	0.05	---	---	0.002	----	----
theta	0°	---	8°	0°	----	8°

NOTE

- PACKAGE BODY SIZES EXCLUDE MOLD FLASH AND GATE BURRS.
MOLD FLASH AT THE NON-LEAD SIDES SHOULD BE LESS THAN 5 MILS EACH.
- DIMENSION "L" IS MEASURED IN GAUGE PLANE.
- TOLERANCE ± 0.100 mm (4 mil) UNLESS OTHERWISE SPECIFIED.
- FOLLOWED FROM JEDEC MO-178C & MO-193C.
- CONTROLLING DIMENSIONS IS MILLIMETER.
CONVERTED INCH DIMENSIONS ARE NOT NECESSARILY EXACT.